



**Principal's Address for Primary 1 Parents**  
**Friday, 2 January 2026**



# Presentation Outline

1. Team Rivervale
2. VMV and Motto
3. Our Belief
4. Niche Programmes: LLP & ALP
5. Grow Well SG
6. Partnering the School
7. Growth Mindset
8. Contact Details



# The School Leaders



**Ms Radha G Subramaniam**  
Principal



**Mrs Maria Lee-Goh**  
Vice Principal  
(Academic)



**Miss Wong Wan Ling**  
Vice Principal  
(Academic)



**Mr Aaron Chia**  
Vice Principal  
(Administration)



# Key Personnel



**Mrs Janet Quek**  
HOD EL



**Mrs Candice Poh**  
HOD MA



**Mdm Yasmeen**  
HOD SC



**Miss Ang Hui Nee**  
HOD MTL



**Mdm Chew Mian Cheng**  
Lead Teacher (CL)



**Mr Song Ziliang**  
HOD PE, Aesthetics  
& CCA



**Mr Roy Loy**  
HOD ICT



**Mdm Jasmine Chiah**  
School Staff Developer



# Key Personnel



**Mdm Marlina Bte Zainal**  
LH EL



**Ms Ng Mui Chin**  
LH MA



**Mr Tang Kwang Wue**  
LH SC



**Mdm Norasidah Binte Murat**  
SH PE & CCA



**Ms Teo Wei Ping**  
LH CL





# Key Personnel



**Miss Poh Mei Cheng**  
Year Head P1P2



**Mrs Angie Liu**  
Year Head P3P4



**Mdm Ruziana**  
Year Head P5P6



**Mdm Ng Hwee Koon**  
Asst. Year Head P1P2



**Mdm Huang Biyun**  
Asst. Year Head P5P6



**Mrs Geraldine Lim**  
SH SEN



# Key Personnel



**Mr Muhd Zakir**  
HOD Student Mgt



**Ms Vikneswari**  
HOD CCE



**Ms Sakina**  
SH Discipline



**Mr Seah Jin Yang**  
SH CCE



# Support Personnel



**Ms Yap Chwee Pheng**  
Senior School Counsellor



**Mdm Aishah Mohamed Johari**  
Special Educational Needs Officer



**Mdm Nur Aisha Bte Muhamad Zaini**  
Special Educational Needs Officer



**Mdm Sharifah Amal**  
Special Educational Needs Officer





# Vision

***The Rivervale –  
School of Excellence, Individuals of Character***

# Mission

**To inspire and develop Riverlites to be  
*Caring, Adaptable and Confident***



# Motto

***Succeed and Excel***

# Core Values

**R<sup>3</sup>ICHET**

***Respect, Responsibility, Resilience,  
Integrity, Care, Harmony, Excellence, Teamwork***



# Learning Dispositions in Rivervale



## Curiosity

*The child has the desire to learn.*

## Reflectiveness

*The child thinks about his/her learning.*

## Commitment

*The child is ready to learn.*

## Resourcefulness

*The child is able to make use of resources.*

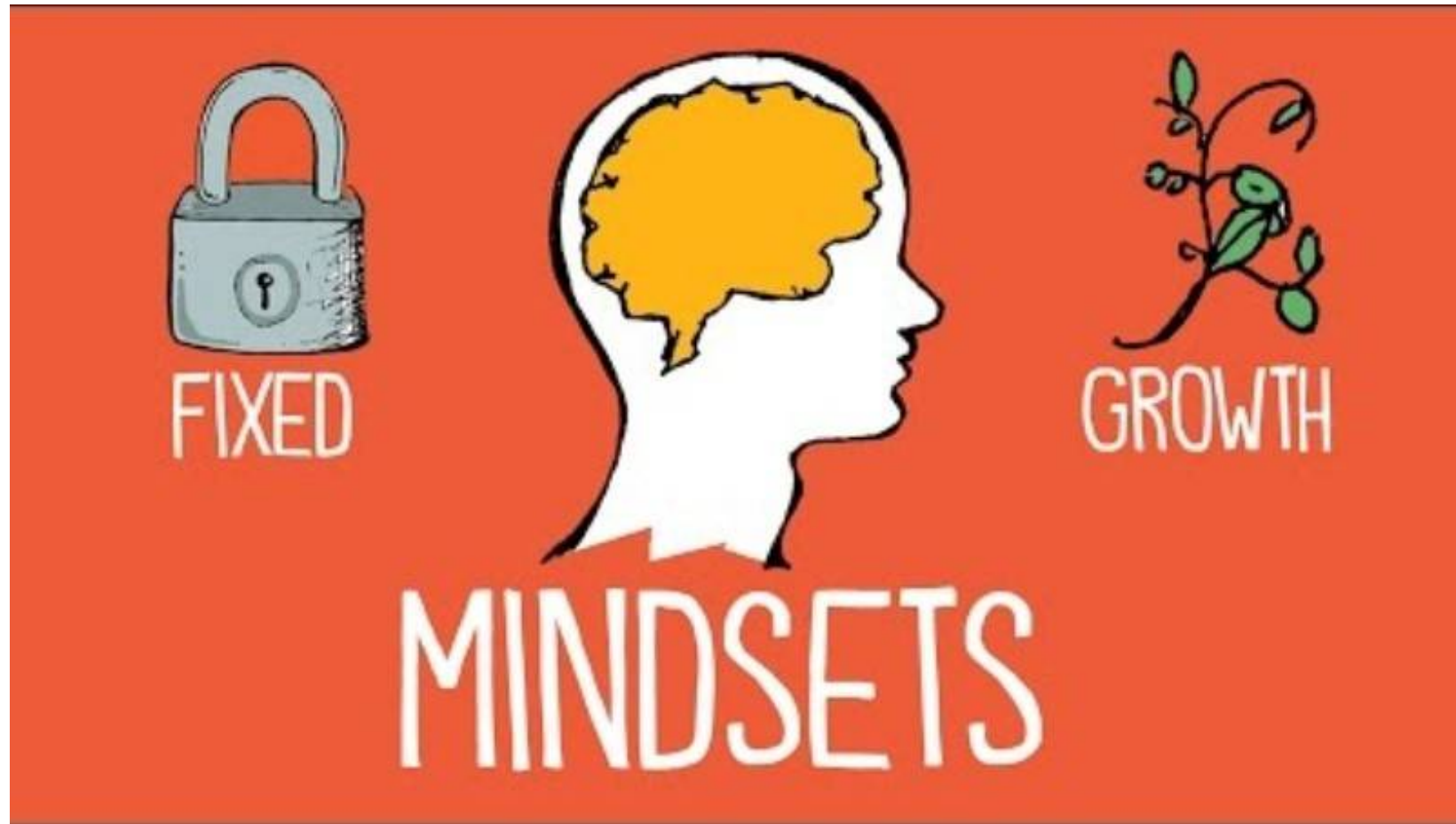


## Our Belief

We strive to be better  
today than we were  
yesterday!



# Partnering the School: Growth Mindset



The Rivervale – School of Excellence, Individuals of Character





# Applied Learning Programme (ALP)

## Multi-Literacy Programme

- Equips with different literacies necessary for the VUCA world
- Encompasses Civic Literacy, Cyber Wellness, Digital Literacy, Environmental Literacy and Financial Literacy





# Learning for Life Programme (LLP)

## Dance and Fitness

- Encompasses dance literacy, fitness and movement
- Develops an appreciation for dance
- Inculcates habits of active lifestyle



## Grow Well SG: Four Habits for 2026



- A national health promotion strategy
- Aims to improve **preventive care** and encourage **healthier lifestyles**

### Term 1



#### Learn Well

Put away phones  
one hour before bed.

### Term 2



#### Sleep Well

Sleep 9 hours  
daily

### Term 3



#### Eat Well

Eat a portion of  
fruit and  
vegetables daily

### Term 4



#### Exercise Well

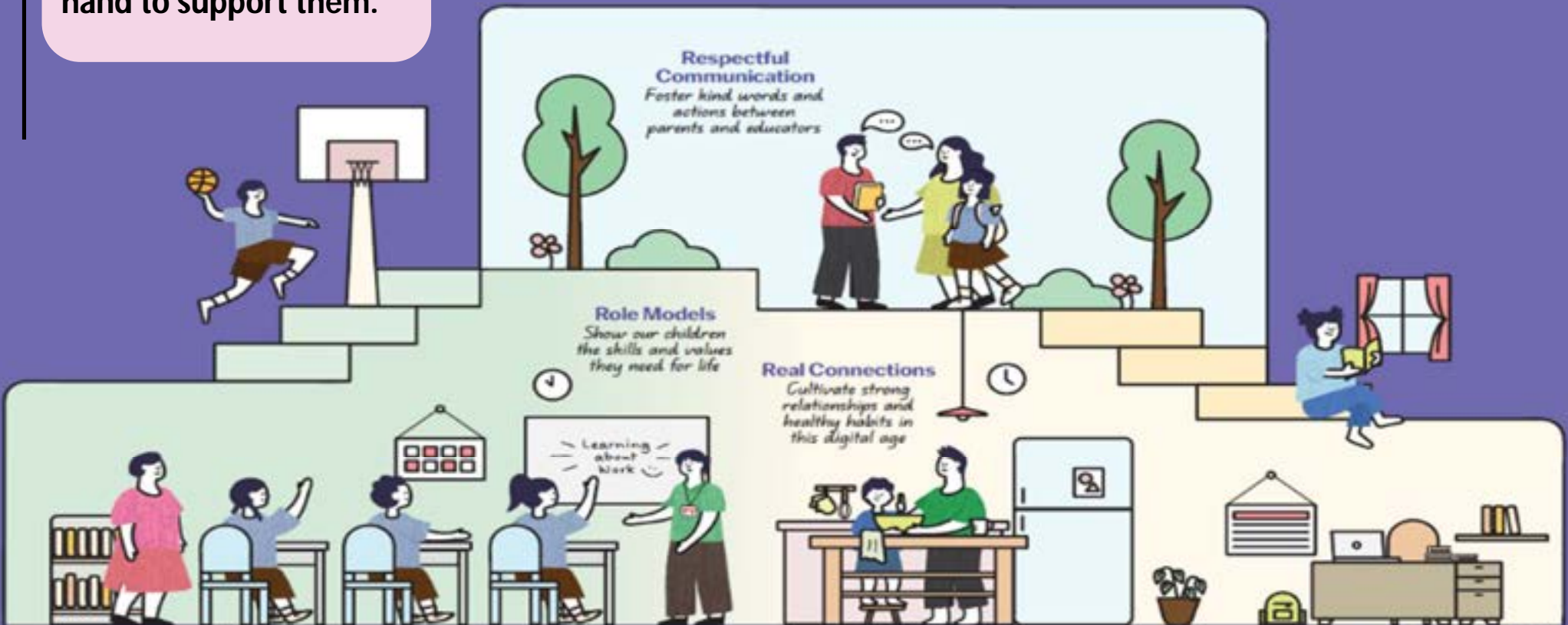
Exercise for 1  
hour daily



Our children do best when schools and parents work hand in hand to support them.

Guidelines for School-Home Partnership

## Raising a Happy, Confident, and Kind Generation Together



A joint effort in 2024 by  
the Ministry of Education and COMPASS

# 3 areas we can work together on to foster **School-Home Partnership**

**1** Respectful Communication

**2** Role Models

**3** Real Connections



# Respectful Communication

**Foster kind words and actions  
between schools and educators**



Listen to and understand each other's perspectives and concerns regarding each child



Communicate kindly using official channels. Teachers are not required to share their personal mobile numbers



Respect each other's time by communicating during working hours





# Role Models

**Show our children the skills and values they need for life**



Find joy in everyday experiences with our children



Instill confidence by encouraging responsibility and believing in our children's abilities



Model good values in words and actions



*Check out this video on MOE YouTube for tips on how parents can support the social-emotional learning of their children.*





# Real Connections

Cultivate strong relationships and healthy habits in this digital age

Establish good habits for our children to stay confident and in control of their technology use



Provide a balanced mix of engaging online and offline activities, at school and at home

Build strong bonds through shared experiences and meaningful conversations



Check Parenting for Wellness Toolbox for conversation starters to facilitate meaningful conversations, and practical strategies on parenting in a digital age.



## Contact Details

Principal	Ms Radha G Subramaniam	rivervale_school_leaders@moe.edu.sg
Vice-Principal (Academic)	Mrs Maria Lee-Goh	
Vice-Principal (Academic)	Miss Wong Wan Ling	
Vice-Principal (Admin)	Mr Aaron Chia	



*Thank You!*

---

The Rivervale – School of Excellence, Individuals of Character



# Primary 1 Induction Programme



The Rivervale – School of Excellence, Individuals of Character



# Learning Experiences @ Rivervale



Hands-On Activities



Public Speaking



Class/Group Discussion

Learning with Technology



Reading



The Rivervale – School of Excellence, Individuals of Character



# Primary 1 Subjects

- English Language
- Mother Tongue Languages
- Mathematics
- Physical Education
- Art
- Music
- PAL
- Social Studies
- Character & Citizenship Education (in MTL)
- \* **Science (from Pr 3 onwards)**



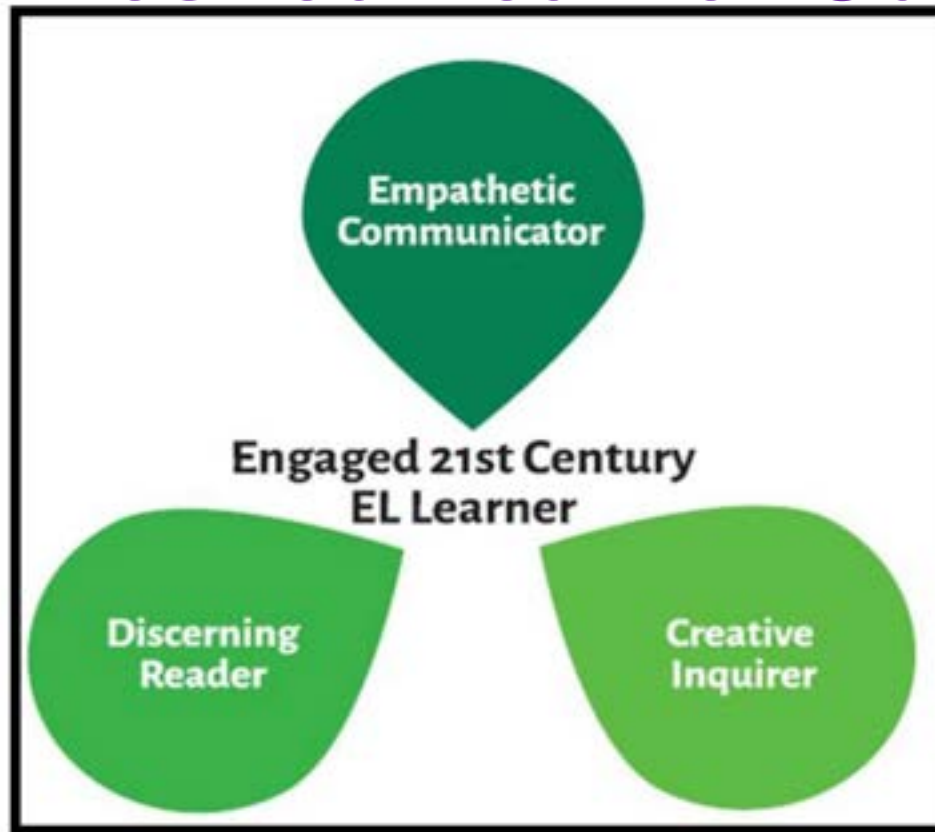
The Rivervale – School of Excellence, Individuals of Character





# EL Syllabus 2020

## Desired Learner Outcomes



### **Empathetic Communicator** –

Provide opportunities for students to discuss issues, listen to different perspectives and develop their own opinion.

### **Discerning Reader** –

Encourage students to read widely and process information critically so as to distinguish fact from falsehoods.

### **Creative Inquirer** –

Encourage students to explore ideas, concepts and areas of interest and promote joy of learning.

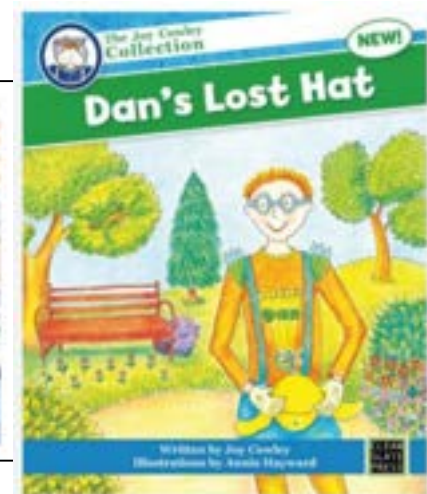
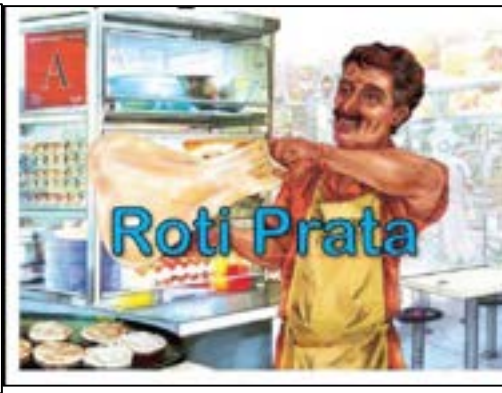
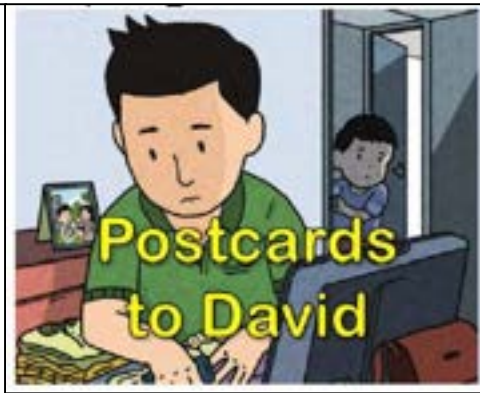


The Rivervale – School of Excellence, Individuals of Character



# English Curriculum

- **STELLAR: Strategies for English Language Learning And Reading**
- **Interactive** literacy programme
- Fosters confidence in learning English using **children's literature**

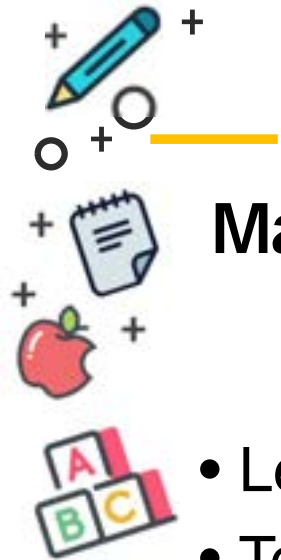


The Rivervale – School of Excellence, Individuals of Character



The Rivervale – School of Excellence, Individuals of Character





## Mathematics Curriculum

- Learning Experiences
- Teaching towards big ideas (make connections across different topics)
- Using Math stories to engage learners



The Rivervale – School of Excellence, Individuals of Character





# Concrete-Pictorial-Abstract (C-P-A) Approach

- Enables students to encounter Math in a meaningful way and translate mathematical concepts from the concrete to the abstract



8 - 3



The Rivervale – School of Excellence, Individuals of Character



## Factual Fluency Programme

Aims to develop fluency on basic number facts

	1	2	3	4	5	6	7	8	9	10	11	12
1	1	2	3	4	5	6	7	8	9	10	11	12
2	2	4	6	8	10	12	14	16	18	20	22	24
3	3	6	9	12	15	18	21	24	27	30	33	36
4	4	8	12	16	20	24	28	32	36	40	44	48
5	5	10	15	20	25	30	35	40	45	50	55	60
6	6	12	18	24	30	36	42	48	54	60	66	72
7	7	14	21	28	35	42	49	56	63	70	77	84
8	8	16	24	32	40	48	56	64	72	80	88	96
9	9	18	27	36	45	54	63	72	81	90	99	108
10	10	20	30	40	50	60	70	80	90	100	110	120
11	11	22	33	44	55	66	77	88	99	110	121	132
12	12	24	36	48	60	72	84	96	108	120	132	144

## P1 Math Carnival

Allows students to apply learning in everyday experiences and foster the joy in learning

# Mathematics Programmes for Pr 1

## P1 Enrichment Programme

Reinforces learning of mathematical concepts & skills through activities & games



The Rivervale – School of Excellence, Individuals of Character





# Mother Tongue Languages Curriculum

- Learning content **meaningful** and **relevant** to **students' daily lives**
- There is a **theme** for every lesson, which is closely related to the student's personal, family and school life



The Rivervale – School of Excellence, Individuals of Character

# Mother Tongue Languages Curriculum

- Use of resources such as flash cards and picture cards to create an **engaging** and **interactive** environment





# Mother Tongue Languages Curriculum

- Students engage in **authentic & meaningful communication** to hone their skills



LANGUAGE ACTIVITIES



SPEECH & DRAMA



PICK & TELL





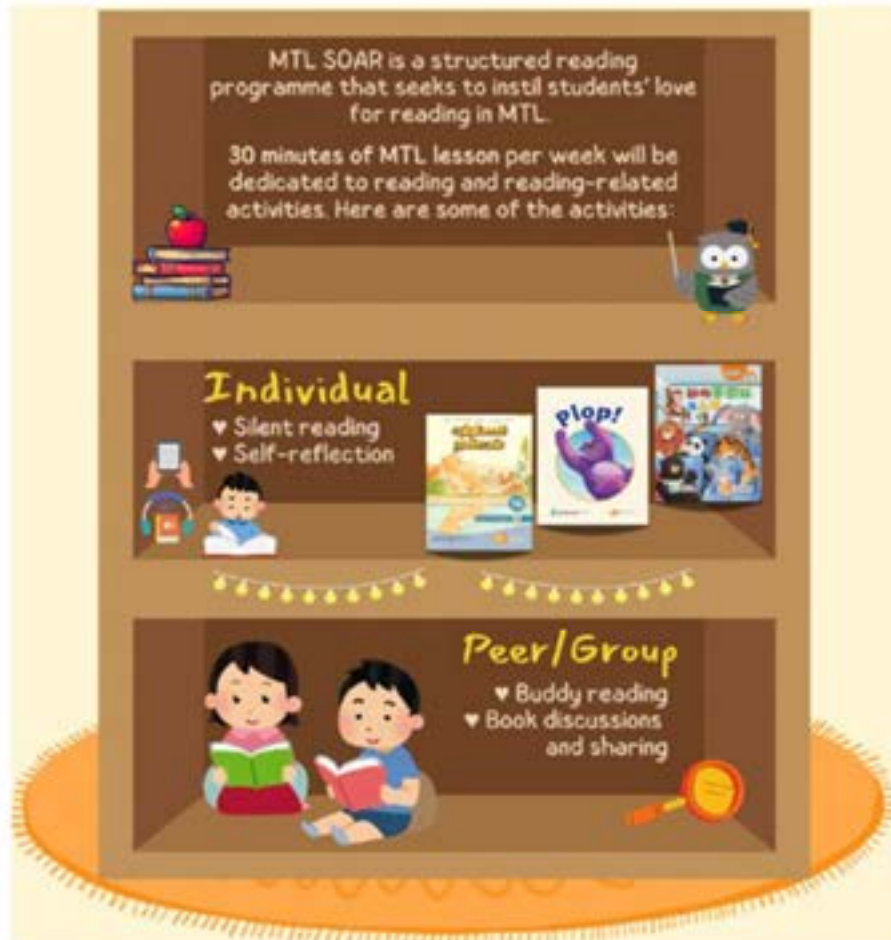


Spark interest, Open minds, Appreciate cultural roots, Rise as a bilingual reader



The Rivervale – School of Excellence, Individuals of Character

# 30 minutes of weekly MTL SOAR periods







# Specialised Early Intervention for Pr 1

- Learning Support Programme for English (LSP)
- Learning Support Programme for Mathematics (LSM)



The Rivervale – School of Excellence, Individuals of Character



# ASSESSMENT

- Daily work
- Bite-sized quizzes
- Performance tasks



The Rivervale – School of Excellence, Individuals of Character



## As a Parent, you can support your child in reading by:



- ✓ Take your child to public libraries to borrow books
- ✓ Allow your child to choose books to read and reread
- ✓ Read to and with your child (or, have your child read to you)
- ✓ Talk about the books and characters read
- ✓ Participate in reading activities organised by NLB



**As a Parent, you can play language games with your child.**



### WORD ASSOCIATION



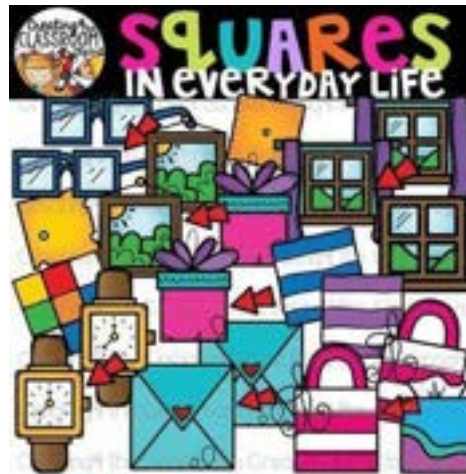
**The Rivervale – School of Excellence, Individuals of Character**



**As a Parent, you can use Math with your child in your daily life.**



Estimate mass of fruits and vegetables before weighing.



Look out for the shapes around us.



Recognising dollars and cents, adding and subtracting.



The Rivervale – School of Excellence, Individuals of Character



**As a Parent, you can respond and interact with your child using the Mother Tongue Language.**



**The Rivervale – School of Excellence, Individuals of Character**



The Rivervale – School of Excellence, individuals of character

# Primary 1 Induction Programme

PAM Curriculum (PE, Art, Music), PAL and CCA



The Rivervale – School of Excellence, Individuals of Character



# What are the subjects under PAM, PAL and CCA?

- Physical Education
- Art
- Music
- Programme for Active Learning (PAL)
- Co-Curricular Activities (CCA)



The Rivervale – School of Excellence, Individuals of Character





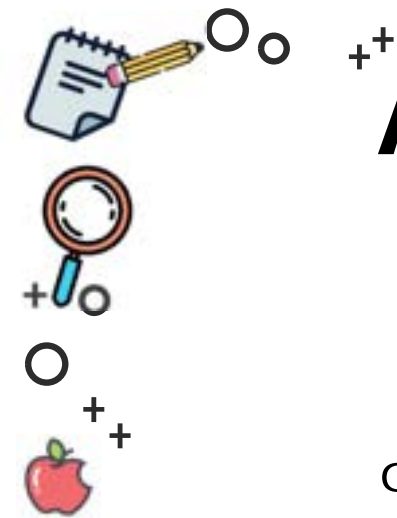
# Nurturing Holistic Development through PAM Curriculum, PAL and CCAs

- Discover their own strengths
- Develop their passion and interests in sports, arts and through CCAs
- Develop values and character



The Rivervale – School of Excellence, Individuals of Character





# Are these subjects and CCAs important?

PAM, PAL and CCAs cultivate  
cognitive, physical and social-emotional competencies



The Rivervale – School of Excellence, Individuals of Character



# Benefits of PAM Curriculum, PAL and CCAs

**Healthy Mind:** Builds character, fosters critical and creative thinking, communication, and social skills

**Healthy Body:** Cultivate healthy lifestyle, development of motor skills and coordination, enhances wellbeing





# Physical Education

These are the Learning Areas:

1. Dance
2. Sports and Games
3. Gymnastics
4. Outdoor Education
5. Physical Health and Safety







# Aesthetics Curriculum

- Music Instrumental Programme
- Art and Music Exposure



The Rivervale – School of Excellence, Individuals of Character



# Assessment

- PE Assessment
  - Performance tasks (.e.g. rolling, catching, throwing, movements)
- Art Portfolio Assessment
  - A collection of student's artworks and process works over time
- Music Assessment
  - Performance tasks (e.g. singing or playing an instrument)







# Programme for Active Learning (PAL)

*Developing a joyful curiosity to learn, express ourselves confidently and working collaboratively our friends*



Our theme for P1



## Programme for Active Learning (PAL)

P1 and P2 students to learn through:

- Sports and Games
- Outdoor Education
- Performing Arts
- Visual Arts



The Rivervale – School of Excellence, Individuals of Character





## Class-based CCA for P1s

- Discovering the interest and talents of our students
- Experience different CCAs before selection (end of P1)
- Each class is allocated to a CCA every week
- Conducted by teacher/instructor/CCA leaders





# Grow Well SG in Our School (2026)



## Learn Well

Term 1



## Sleep Well

Term 2



## Eat Well

Term 3



## Move Well

Term 4



The Rivervale – School of Excellence, Individuals of Character

# THANK YOU!



The Rivervale – School of Excellence, Individuals of Character



# Primary 1 Induction Programme

Student Development Team



The Rivervale – School of Excellence, Individuals of Character



# Key Personnel Overseeing P1 Level

## Year Head (Lower Consortium)

Miss Poh Mei Cheng

Email: [poh\\_mei\\_cheng@moe.edu.sg](mailto:poh_mei_cheng@moe.edu.sg)



## Assistant Year Head (Lower Consortium)

Mdm Ng Hwee Koon

Email: [ng\\_hwee\\_koon@moe.edu.sg](mailto:ng_hwee_koon@moe.edu.sg)

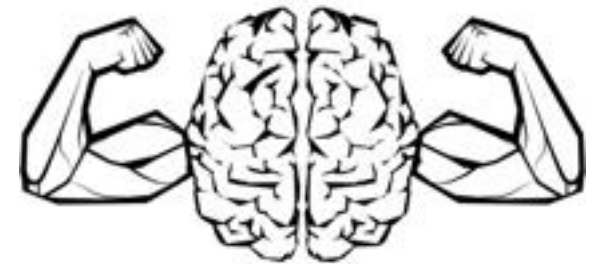


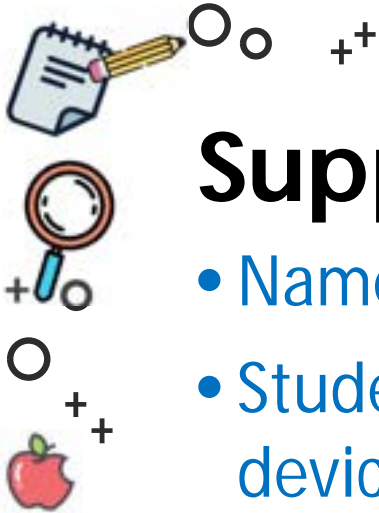


# Supporting Your Child's Learning

## Adopt a Growth Mindset

- Everyone Can Learn!
- My Brain Is Like A Muscle that Grows!





# Supporting Your Child's Learning

- Name tags to be on school uniform
- Students are strongly discouraged from bringing electronic devices (mobile phones and smart watches) except POSB and Healthy 365 smart watches to school. Students who choose to bring them are to keep them switched off and place them in their bags at all times.
- All religious ornaments if worn, should not be visible to others.
- Girls to put on small and simple ear studs







# P1 Lifeskills Programme

- To nurture our P1 students to be more independent learners in primary school
- Skills include:
  - Social-emotional skills
  - Communication skills
  - Problem solving skills



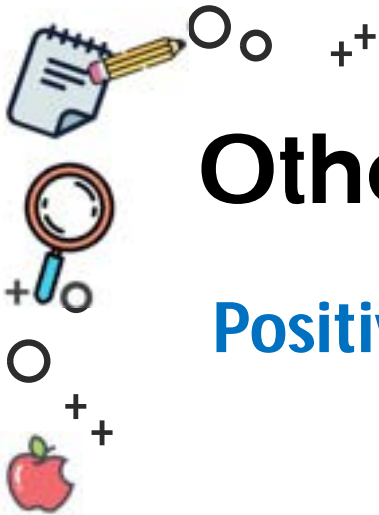
# Join the Parent Support Group (PSG)



https://www.rivervale.school.nz/psg/



The Rivervale – School of Excellence, Individuals of Character



# Other Stakeholders

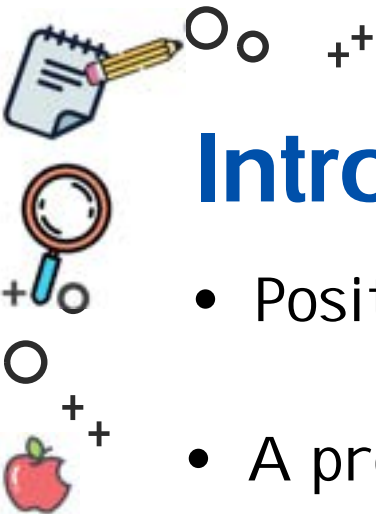
## Positive Parenting Programme (Triple P)

An evidence-based programme in partnership  
with MWS & Ministry of Social & Family  
Development



The Rivervale – School of Excellence, Individuals of Character





# Introduction to...

- Positive Parenting Programme (Triple P)
- A proactive programme that helps parents learn useful parenting tips
- Focus on child's holistic development







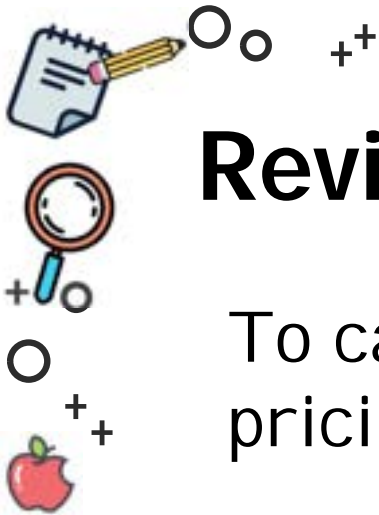
# Pro-Teach

## School-Based Student Care Centre (SCC)

Allow your child to stay **till 5pm** to enjoy the **social interaction through the activities** that Pro-Teach has planned for them



The Rivervale – School of Excellence, Individuals of Character

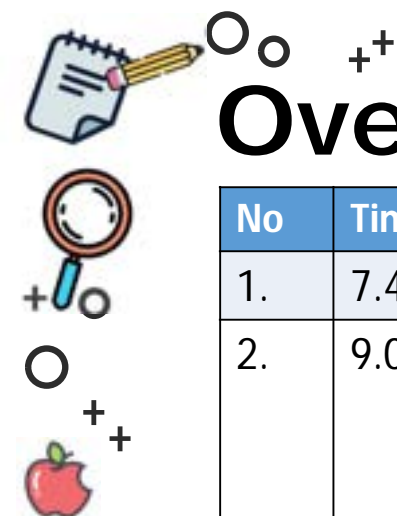


# Revised Canteen Pricing for Bentos

To cater to varying student needs, the pricing for bentos will be revised to;

- **Regular portion \$2.00**  
**Large portion \$2.60**
- **Additional items: \$0.60 each**

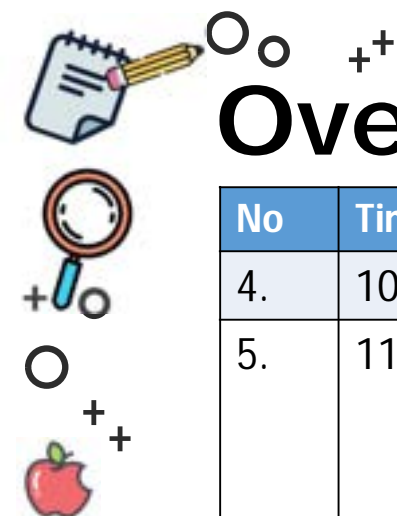




# Overview of P1 Induction Activities

No	Time	Activity	Venue
1.	7.45 am to 9.00am	Parent Induction Briefing	Hall
2.	9.00am to 9.45am	<b>P1 Recess</b> 1Respect, 1Resilience, 1Care and 1Excellence  <b>P1 School Tour</b> 1Responsibility, 1Integrity, 1Harmony	Canteen   School premises
3.	9.45am to 10.30am	<b>P1 Recess</b> 1Responsibility, 1Integrity, 1Harmony  <b>P1 School Tour</b> 1Respect, 1Resilience, 1Care and 1Excellence	Canteen   School premises



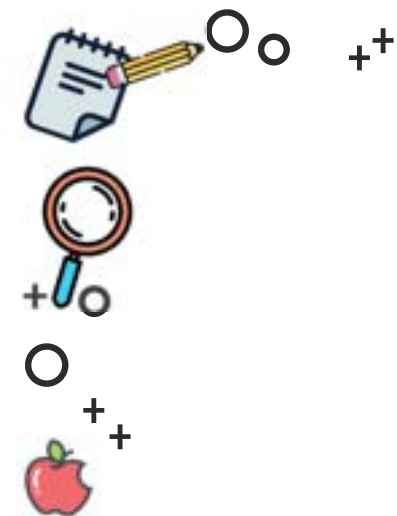


# Overview of P1 Induction Activities

No	Time	Activity	Venue
4.	10.30 am to 11.30am	Meet the FTs session	P1 Classrooms
5.	11.30am to 12.00pm	Lesson Activity with your Child  (1 parent per child due to space constraints)	P1 and P2 Classrooms
6.	12.00pm to 12.30pm	Lesson Activity with your Child  (1 parent per child due to space constraints)	P1 and P2 Classrooms
7.	12.30pm to 1.30pm	Parents leave the school to have lunch or buy lunch	
8.	1.30pm to 1.45pm	Parents fetch their child from the respective gates. (Front gate, Back gate)	Front gate Back gate



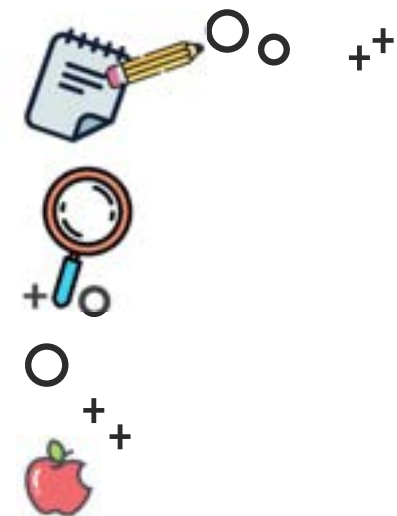




# Q&A Session



The Rivervale – School of Excellence, Individuals of Character



We look forward to partnering you to  
develop the whole child in every Riverlite.

Let them Go.

Let them Grow.

# THANK YOU!



The Rivervale – School of Excellence, Individuals of Character